

DELMADÉ

Shaping the Land

HYDRALADA®

Rotary Vine Trimmers

Hydralada Rotary Trimmers are available in many configurations to suit almost every canopy style. Designed and manufactured to trim fast and efficiently, these rotary trimmers allow you to cover the ground without sacrificing the quality of the job.



VINICULTURE

PRODUCT CATALOGUE

www.delmade.com.au 1800 335 623

VINICULTURE

Hydralada Trimmer VTR1

VTR1 Half-Row / Trim one half row in one pass.

Single mast design, 1.80m vertical cutter board, five rotary blades, topper assembly.

Customise your Half Row:

/ Over-row Module

The Half Row VTR1 Trimmer can be adapted to trim one complete row by adding an over row attachment.

/ Hydraulic Lift Module

This machine can be fitted with optional Hydraulic Lift.

/ Hydraulic Tilt Module

A Hydraulic Tilt module can be fitted to the VTR1 Trimmer. This allows the operator to adjust the angle of the trimmers while in operation. Both the Hydraulic Tilt and Hydraulic Lift require extra tractor remotes.

/ Rotary Topper

Two different topper configurations available, Tri-Star (shown), or Twin Rotary blade.



Image shows single-side over-row trimmer.



1.80m

Single cutter board length

800mm

Tr-Star topper diameter

Productive

Trimming speed

Tractor Oil Supply

- 20 lpm
- 2000psi
- Dual tractor auxiliary oil remote outlets
- Joystick remote control station (optional)
- 20 lpm Flow Controller

Trimmer Board

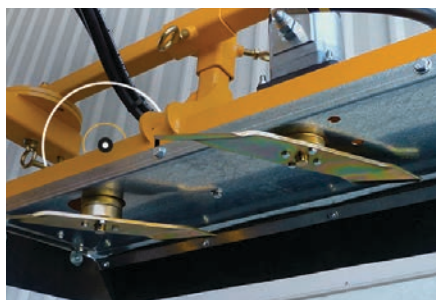
- Single vertical board
- Rotary blades x 5
- Heavy duty spindles
- Heavy duty bearings
- Belt drive
- Rigid board
- Wire deflection

Frame

- Single mast
- Heavy duty headstock
- Breakaway system
- Durable



HEAVY DUTY HEADSTOCK



TWIN ROTARY TOPPER (700mm)



UNIQUE BLADE DESIGN

Strong rigid frame design with heavy duty headstock.

The VTR1 Single Side trimmer is designed to trim fast and efficient and last for many hours of hard work. The VTR breakaway system mounted at the top of the cutter bar lets go in the event of accidental contact.

Different topper options available.

Two different topper configurations available, Twin rotary blade (shown), or Tri-Star.

Special blade designed to suck and trim.

Rotary blade creates suction, drawing the vine leaves into the trimmer. A sharp cutting edge is maintained due to this effect. Superior Spindle design with four bearings per spindle.

VINICULTURE

Hydralada Trimmer VTR2

VTR2 Double Inter-row / Trim two half rows in one pass.

The Hydralada Inter Row VTR2 Trimmer has a single mast with two vertical cutter boards and two rotary toppers trimming two half rows in one pass.

Customise your Inter Row:

/ Over-Row Module

The Inter Row Trimmer VTR2 can be adapted to trim two complete rows by fitting an over row module which includes two additional vertical trimmer boards.

/ Hydraulic Lift & Tilt Module

Hydraulic Lift and/or Tilt Module is available to be fitted to the Inter Row VTR2 machine, allowing operator to adjust height and/or angle of trimmer while in operation. Requires extra tractor remotes or specify the Remote Control Station option.

/ Remote Control Station

This option includes a hydraulic control bank with flow control and requires only one tractor remote outlet. Up to six functions can be operated with this intuitive control panel. Ideal for higher spec trimmers and tractors.

/ Rotary Topper

Two different topper configurations available, Tri-Star (shown), or Twin Rotary Blade.

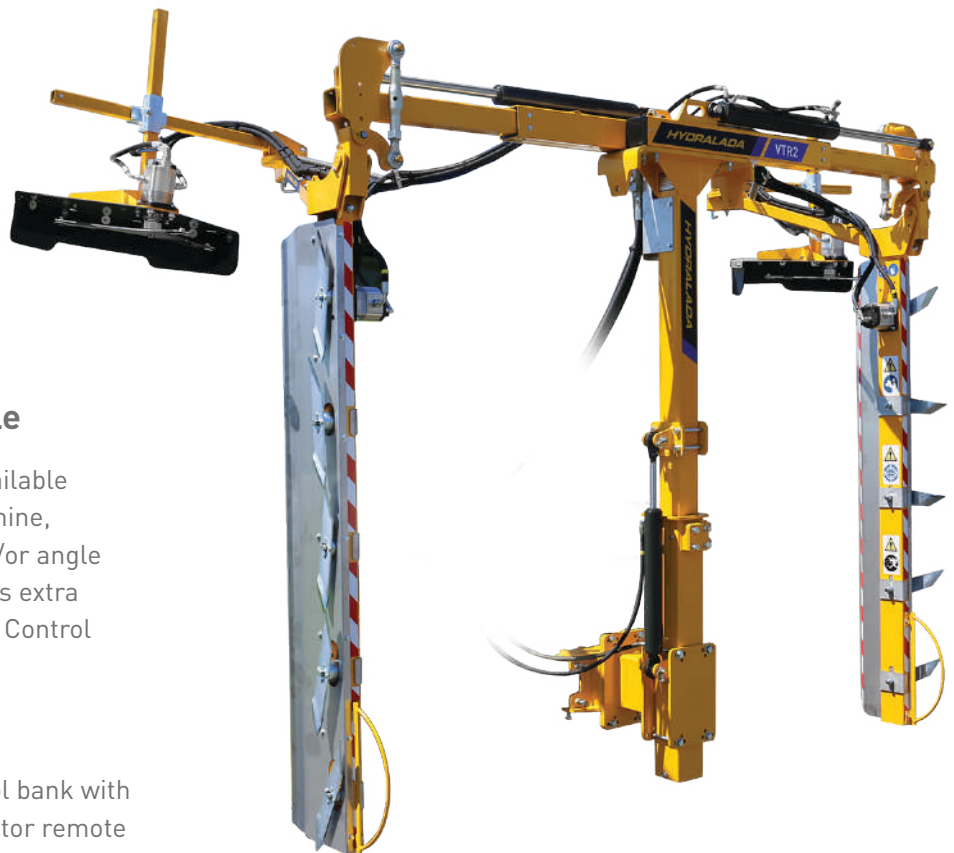


Image shows a double inter-row trimmer.



1.80m

Twin cutter board length

800mm

Tri-star Rotary topper diameter

Productive

Trimming speed

Tractor Oil Supply Required - VTR2 Model

- 40 lpm
- 2000 psi
- Dual tractor auxiliary oil

Trimmer Boards

- 2 x Vertical Trimmer Boards
- Rotary blades x 10 (5 per board)
- Heavy duty spindles
- Heavy duty bearings
- Belt drive
- Rigid board
- Wire deflection

Frame

- Single Mast
- Heavy duty headstock with nylon bush inserts
- Gas strut breakaway system
- Excellent visibility
- Durable construction



ROTARY BLADE



ROTARY TOPPER



FRAME

Unique design sucks and cuts

Rotary blade creates suction, drawing leaves into trimmer. Vertical cutter board is pivoted at top, leaving clear throat for trimmed foliage to fall to ground.

Ejects trimmings away from vine

Available in Tri Star Flail, or Twin Rotary Blade. All options have been specially designed and are effective for trimming and removing the vegetation into adjacent rows.

Heavy duty and adjustable

Single mast frame with hydraulic width adjustment makes it easy to adapt to suit different vineyards. Two vertical cutter boards can be adjusted and toppers moved independently. The single mast frame provides excellent visibility.

VINICULTURE

Hydralada Trimmer VTR3

VTR3 Double Inter-row / Trim two half rows in one pass.

The Hydralada Inter Row VTR3 Trimmer has a double mast with independent Hydraulics lift and a vertical cutter boards and a rotary topper per side trimming two half rows in one pass.

Customise your Inter Row:

/ Over-Row Module

The Inter Row Trimmer VTR3 can be adapted to trim two complete rows by fitting an over row module which includes two additional vertical trimmer boards.

/ Hydraulic Lift & Tilt Module

Hydraulic Lift and/or Tilt Module is standard on the Inter Row VTR3 machine, allowing operator to adjust height and/or angle of trimmer while in operation.

/ Remote Control Station

This option includes a hydraulic control bank with flow control and requires only one tractor remote outlet. The standard five function system can be operated with this intuitive joystick control panel.

/ Rotary Topper

Two different topper configurations available, Tri-Star (shown), or Twin Rotary Blade.



**Image shows a double
inter-row trimmer.**



1.80m

Twin cutter board length

800mm

Tri-star Rotary topper diameter

Productive

Trimming speed

Tractor Oil Supply Required - VTR2 Model

- 40 lpm
- 2000 psi
- Dual tractor auxiliary oil

Trimmer Boards

- 2 x Vertical Trimmer Boards
- Rotary blades x 10 (5 per board)
- Heavy duty spindles
- Heavy duty bearings
- Belt drive
- Rigid board
- Wire deflection

Frame

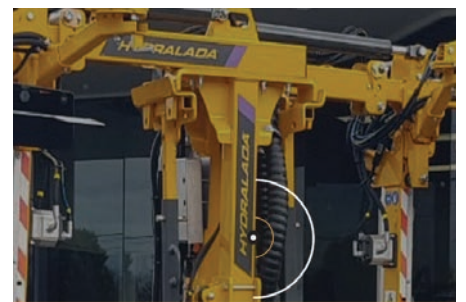
- Single Mast
- Heavy duty headstock with nylon bush inserts
- Gas strut breakaway system
- Excellent visibility
- Durable construction
- Joystick control
- Hydraulic Tilt
- Independant Hydraulic height



ROTARY BLADE



ROTARY TOPPER



FRAME

Unique design sucks and cuts

Rotary blade creates suction, drawing leaves into trimmer. Vertical cutter board is pivoted at top, leaving clear throat for trimmed foliage to fall to ground.

Ejects trimmings away from vine

Available in Tri Star Flail, or Twin Rotary Blade. All options have been specially designed and are effective for trimming and removing the vegetation into adjacent rows.

Heavy duty and adjustable

Single mast frame with hydraulic width adjustment makes it easy to adapt to suit different vineyards. Two vertical cutter boards can be adjusted and toppers moved independently. The single mast frame provides excellent visibility.

TRI-STAR TOPPER

Includes three flail blades designed to trim and eject vegetation away from the tractor and out of the top of the vines. Fast, clean and efficient trimming action. Simple and effective system with low cost of operation.



TWIN ROTARY BLADE TOPPER

Twin Rotary Topper

An alternative to the Tri-Star Topper. This Twin Rotary Topper trims clean and fast. Uses the unique Hydralada Trimmer Blade.



TRIMMER STAND

Trimmer Stand

A robust, well balanced stand to store the trimmer when it has been removed from the tractor.



INDEPENDENT BOARD TILT

Hydraulic Board Tilt

This allows the vertical trimmer board to be hydraulically angled independent to the main frame.

HYDRAULIC LIFT

Hydraulically adjustable trimmer height provides 400mm variation. This enables the complete trimmer assembly to be hydraulically raised and lowered while in operation. Combined with the manual adjustment, the trimmer can be set up to suit most vineyard styles.



HYDRAULIC TILT MAST

Mast Tilt

Hydraulically adjustable tilt of the complete trimmer assembly enables the machine to be angled during the trimming operation.



ELECTRIC CONTROLS

Tractor Cab Controls

Includes a hydraulic control station with electric remote joystick for all functions. On/off, tilt, lift, side-shift of the trimmer head.



OVER-ROW ATTACHMENT

Over-Row Trimming

Both the VTR1 and VTR2 can be fitted with an extra over-row vertical cutter board which allows a full row to be trimmed in one pass. This is a modular attachment option.

VINICULTURE

Lifting your game.



All specifications are nominal only. Some images on this leaflet may feature other models and optional equipment. The Technical specifications and photographs are provided for informational use only, and are in no way contractually binding. Hydralada Company Ltd, reserves the right, without prior notice, to make any modifications and improvements it deems necessary to its products. Photo credits © HYDRALADA – Design: HYDRALADA communications department.

HYDRALADA®

 **AUS 1800 335 623**

www.delmade.com.au info@delmade.com.au